



# MILTECH™ 919

## Military Grade Gigabit Ethernet Switch On Board (GSoB)

### FEATURES

One of the most exciting advancement in technology over the last decade has been unmanned vehicles including:

- Unmanned aerial vehicles (UAVs) or Drones
- Land autonomous vehicles (UGVs)
- Robots
- Other unmanned support vehicles

These vehicles must be agile, compact and highly intelligent. In order to support this sophisticated intelligence, these platforms may have to carry and connect a variety of Ethernet-based devices including computers, sensors, and targeting systems - all in compact platforms that must operate in extreme environmental conditions.

The MILTECH919 is cost-effective, ultra-compact board-level Ethernet switching solution that is the most compact

solution available on the market today. This board-level switch is ideal for integrating in to system level solutions being developed with size, weight, power and cost (SWaP-C) at top of mind .

Advanced network features, never before found in a package of this size, include switching protocols, virtual LANS (VLANs), traffic prioritization (QoS), and bandwidth aggregation are standard. An evaluation board is available for the 919, allowing full testing and validation of the MILTECH919.

The MILTECH919's gigabit speeds and 24VDC power make it instantly compatible with any network device and power systems.

### SPECIFICATIONS

<b>ETHERNET PORTS</b>	<ul style="list-style-type: none"> <li>• Managed 8 x switched 10/100 /1000 ports</li> <li>• 1 X 100/1000 fiber port</li> </ul>
<b>NETWORKING</b>	<ul style="list-style-type: none"> <li>• Spanning Tree (802.1d), RSTP (802.1w) and multiple Spanning Tree (802.1S) for fast recovery rings</li> <li>• Security via Radius Authentication 802.1x, Port Security, Port Mirroring</li> <li>• Multicasting (IGMP Snooping), GARP, GMRP, and GVRP Broadcasting and flooding Control up to 8K Groups.</li> <li>• 802.1q Tagged based VLAN up to 4K VLAN groups.</li> <li>• QoS Multi-Layer Classifier, 802.1p, ToS/DSCP traffic classification. WFQ, Strict Queuing.</li> <li>• Bridge support for Q-in-Q.</li> <li>• L3 static routing</li> <li>• Link Aggregation 802.3AD.</li> <li>• WEB, CLI, Telnet Management.</li> </ul>
<b>CONNECTORS</b>	<p>1 x Samtec board to board connector to represent:</p> <ul style="list-style-type: none"> <li>• Power input</li> <li>• LAN ports</li> <li>• Fiber ports</li> <li>• Management RS-232</li> <li>• LED Indication Per Port (Link/Activity)</li> </ul> <p>Mating connector : 1 x SAMTEC ERF-8-050-0-7.0-X-DV</p>
<b>STANDARDS</b>	<ul style="list-style-type: none"> <li>• MIL-STD-461E, MIL-STD-810F GM, IP68 when installed in an appropriate chassis</li> </ul>



Evaluation board

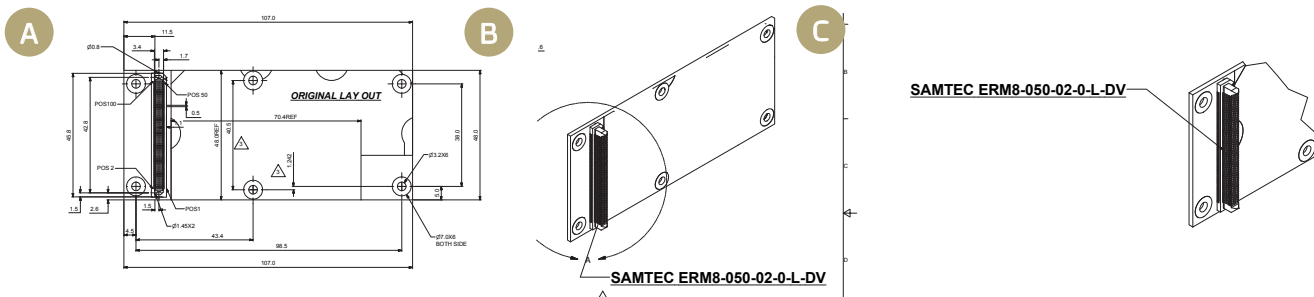


# MILTECH™ 919

Military Grade Gigabit Ethernet Switch On Board (GSoB)

## SPECIFICATIONS

<b>PERFORMANCE</b>	<ul style="list-style-type: none"> <li>• 26.8 Mpps wire speed forwarding rate</li> <li>• 20 Gbps maximum forwarding bandwidth</li> <li>• 8K MAC Address</li> </ul>
<b>STANDARDS COMPLIANCE</b>	<ul style="list-style-type: none"> <li>• IEEE 802.1x MAC based Authentication</li> <li>• IEEE 802.1Q Vlan Tagging</li> <li>• IEEE 802.1P QoS</li> <li>• IEEE 802.1S Multiple STP</li> <li>• IEEE 802.1W Rapid STP</li> <li>• IEEE 802.1AD Link Aggregation</li> <li>• IEEE 802.1X</li> </ul>
<b>POWER</b>	<ul style="list-style-type: none"> <li>• Voltage Input: 6-36VDC</li> <li>• Power Consumption: 8W Max</li> </ul>
<b>ELECTROMAGNETIC</b>	<ul style="list-style-type: none"> <li>• MIL-STD-461E Electromagnetic compatibility</li> <li>• CE-102, CS-114, CS-115, CS-116, RE-102, RS-103 (when installed in an appropriate chassis)</li> </ul>
<b>ENVIRONMENTAL</b>	<ul style="list-style-type: none"> <li>• MILSTD-810F/G/GM:</li> <li>• Random vibration (514.5), Bench Handling (516.6VI), High Temp.(501.5I,II), Low Temp.(502.5), Humidity (507.5II), Air Pressure (500.5I,II), Blowing Rain (506.5I), Immersion (512.5I), Salt Atmosphere (509.5I), Blowing Dust (510.5I), Loose Cargo Vibration (514.6II), Wind Analysis.</li> </ul> <p>(when installed in an appropriate chassis)</p>
<b>PHYSICAL</b>	<ul style="list-style-type: none"> <li>• Dimensions: 107mm (L) x 48(W) x 5(H), including connectors &amp; hardware</li> <li>• Weight: 52g</li> </ul>
<b>INSTALLATION</b>	<ul style="list-style-type: none"> <li>• 6 x mounting holes for board to board mounting</li> </ul>
<b>COOLING</b>	<ul style="list-style-type: none"> <li>• No Moving Parts. Passive Cooling.</li> </ul>
<b>OPERATING TEMP</b>	<ul style="list-style-type: none"> <li>• -40°C to +85°C (-40°F to +185°F) Cold Start-Up</li> </ul>
<b>STORAGE TEMP</b>	<ul style="list-style-type: none"> <li>• -45°C to +85°C (-49°F to +185°F)</li> </ul>



## ORDERING INFORMATION

PART NUMBER	DESCRIPTION
MILTECH 919	Manage Military Grade Gigabit Ethernet Switch, 8 x 10/100/1000TX + 1 X 100/1000FX
1-919-EVB	Evaluation carrier board for MILTECH919 – provides 8 X RJ45 ports +1 X SFP slot and a power connector.